



# AI-Driven Predictive Models for Healthcare Supply Chains: Developing AI Models to Predict and Optimize Healthcare Supply Chains, especially during Global Health Emergencies

Vivek Yadav

USA

## ABSTRACT

Healthcare supply chains are vital in delivering medical goods and products so that patients get the products on time, especially during events that may trigger such diseases as flu. The COVID-19 experiences reveal the weakness in these supply chain systems and hence the need for enhanced supply chain forecasting and future formulations. Thus, the proposed paper aims to bring to the discussion AI-driven end-to-end health SCA models aimed at enhancing the SCA of Healthcare facilities. Based on synthetic data, machine learning, and optimization algorithms, the goals of the suggested models are to predict the demand and optimize the logistic processes. The process is a process of data gathering, model building, and assessment of the Model's proficiency by the use of parameters such as Mean Absolute Error. The case proves a high degree of accuracy in the demand forecast while also maintaining optimal costs in the supply chain. This paper focuses on the opportunity to use AI not only to improve the indexes that characterize the healthcare supply chain but also as a research agenda with implications for practice. Lastly, the study brings the argument on the application of AI solutions in supply management chains to bear by driving effectiveness in the delivery of health services in crises.

## ARTICLE HISTORY

Received January 03, 2022  
Accepted January 14, 2022  
Published January 17, 2022

## KEYWORDS

Healthcare Supply Chain, AI, Predictive Models, Optimization, Machine Learning, Demand Forecasting, Global Health Emergencies, Logistics Management, Covid-19, Supply Chain Resilience

## Introduction

Healthcare supply chains are some of the most important structural frameworks that support the provision of medical necessities in hospitals. These are supply chains that are extended and have many links and the processes include production, transportation, storage, and usage of products and services. COVID-19 has brought out several issues related to the supply chain of healthcare globally and has pointed out the dire need for developing better demand and supply forecast models and better optimization techniques to deal with situations of extreme fluctuations in demand and supply [1]. In conventional supply chain management models, there are major challenges in responding to such conditions due to the time taken before new and better ways of meeting the needs of the health sector are developed.

Artificial Intelligence (AI) has the solution to these challenges in supply chain management, as applied below. AI-based predictive analytics can help process a huge amount of data to predict the demand for particular products, stock management, and transportation, making healthcare systems sustainable in tackling world disasters. This paper is an opportunity to create and present AI models for the prognosis and optimization of healthcare supply chains in cases of emergency [2].

The development of the proposed models is to increase the capability of utilizing machine learning algorithms and data

analytics for early identification of supply chain disruptions and subsequent preventive actions that shall lead to the satisfaction of healthcare needs during crises [3].

## Aim and Objectives

### Aim

The primary aim of this research is to use artificial intelligence techniques to build forecasting systems to enhance the supply of medical-related products in the healthcare value chain, especially during epidemics.

### Objectives

- To present the findings of the literature search concerning AI applications in the supply chain of healthcare.
- To find out the existing systems and the research and practice that has been carried out on them.
- To create and deploy AI models for accurate demand conditions and supply chain management.
- To perform experiments on the proposed models incorporating synthetic data to evaluate the existing models.
- To discuss the prospects and benefits that may arise from implementing AI in SCM for healthcare organizations.

Contact: Vivek Yadav, USA.

## Literature Review

### AI in Healthcare Supply Chains

Integrated technologies like “artificial intelligence” (AI) have become sufficiently employable in addressing the general healthcare supply chains since they have been so effective in analyzing big data [4].

AI technologies entail the deployment of “machine learning” algorithms such as neural networks, decision trees, and support vectors in aspects such as demand forecasting, inventory management, and logistics [5].

They are in a position to process diverse data and integrate the data collected from the historical sales records, the prevailing market trends, epidemical situations, and seasonality features. Such data collected from these sources can then be input into the AI models which in turn help to generate accurate results such as prognoses and advice [6].

The real-time integrated supply chain also refers to the computerized supply chain augmented with the help of artificial intelligence. Such systems can facilitate real-time analytics and make alerts and suggestions to the managers of the supply chains, allowing them to act on changed circumstances rapidly [7]. For instance, the gap in usage of some available medical products is easily recognized by an AI system during an epidemic so the procurement and distribution of particular products is easily escalated. This preventive strategy helps manage supply chain disruptions and guarantees stockout of important commodities [8].

### Predictive Analytics

Data control is a sub-discipline of data analysis that deals with the application of previous data to future outcomes. In the healthcare logistics context and particularly within the healthcare supply chains, predictive analytics is a critical component for predicting demand for medical goods, providing early indications of disruptions, and most importantly providing insights for effective resource management [9]. A predictive system makes use of statistical methodologies or even artificial intelligence to analyze past data culminating in predictions that are used in supply chain management [10].

When the H1N1 pandemic occurred, models were vital in resource, in this case, vaccines to be administered across the population. This allowed the healthcare providers to predict the levels of demand for vaccines in different regions, and therefore come up with resource utilization strategies [11]. Through the application of Big Data and Analytics, available vaccines are better provided, and wastage is minimized to allow for a better response to the pandemic across the healthcare industry.

### Optimization Techniques

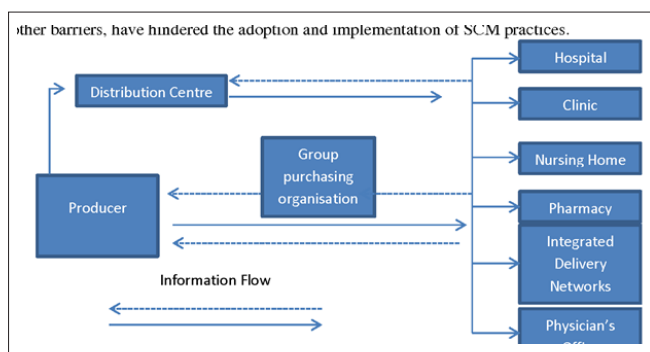
Inventory management relies on optimization techniques that are held very dear in supply chain management based on a desire to get the best out of constrained resources. Such methods include linear programming, genetic algorithms, and heuristic methods, all of which provide distinct approaches critical in addressing hard optimization challenges [12]. More in the context of the

healthcare supply chains are the optimization models that address the problems of resource allocation, inventory management, and delivery scheduling.

Linear programming is a very well-known optimization technique that involves the formulation of particular supply chain problems by using mathematical models where the goal of the problem is represented by an objective function and what needs to be achieved is represented by constraints [13]. Genetic algorithms are based on the natural selection process and are applied in the way that a population of solutions for an optimization problem is matched. Heuristics are commonly differentiated from algorithms as methods for addressing problems by employing realistic strategies to arrive at acceptable solutions in the shortest time possible [14]. These techniques, when complemented with the use of Artificial Intelligence, further raise the capacity to solve challenging supply chain issues more effectively.

### Current State of Healthcare Supply Chains

Supply chains in the healthcare industry are strategic systems in identifying, acquiring, processing, and delivering medical care products and services to the primary stakeholders, which include the healthcare facilities and patients. These supply chains include a vast array of goods such as medicines, health equipment, protective wear, and other relevant medical products. This paper aims to focus on the necessity and significance of effective and reliable Supply Chain Management applied to the healthcare sector to guarantee that the healthcare systems are capable of adequately meeting the population's constant healthcare requirements as well as in extraordinary situations. That said, healthcare supply chains are not without several critical challenges. There are many challenges, but one of the most critical is the disconnection of supply chains that contain several linkers and participants. Such fragmentation creates some drawbacks, such as possible delays in supply delivery and higher prices. In addition, the healthcare sector is well governed and products will go through several distribution channels before they reach a hospital, an aspect that makes it even more challenging. Strict regulations like those set by the FDA of the United States affect production since they decrease the time it takes to get products to the market. Stock-out, another well-known problem in managing Healthcare Supply Chain, is another critical issue. Maintaining the right balance of stock is essential: if inventory is too much then they pull out more cost on storage and more consumption of the product may happen which is wastage while if inventory is low then they may lead to patient safety issues. This issue is more sensitive in the course of world epidemics or, for example, the covid19 pandemic where the demand for some goods increases dramatically. In such situations, every logistics chain of a healthcare organization also gets stretched to the limit and indicates the weaknesses of existing structures. Globalization has made matters worse in the supply of healthcare systems. Most of the healthcare products are produced in various parts of the globe and that exposes the supply chain to disruptions resulting from factors such as political instability, trade barriers, and acts of god. For example, COVID-19 brought into perspective the vulnerability of enterprises in having departmental single sources for supply that are prone to disruptions [8].



**Figure 1:** Trends in Healthcare Supply Chain

With the help of IT solutions, like information systems and data analytics, certain aspects of the supply chains in healthcare have been enhanced. Nonetheless, the sector is not as advanced as others regarding its implementation of various modern technologies such as AI and blockchain. They can be used to increase visibility over the supply chain, enhance the forecast abilities, and optimize logistic operations.

### Role of AI in Supply Chain Optimization

Introducing Artificial Intelligence (AI) into the supply chain has been a revolutionary step as it has provided a way to adopt the technological advancement in the supply chain for effective solutions in numerous ways of the supply chain management system. In the healthcare sector, AI the importance is higher because here the supply chains are intricate and vital AI can improve the supply chain in many ways such as efficiency, accuracy, and reliability. In this section, the author discusses AI and the supply chain of healthcare systems by looking at the various applications. Another advantage of AI which is fundamental to supply chain optimization is that it can take large chunks of information and transform such information into practical solutions [10]. The use of machine learning techniques which are a component of AI can sift through large data sets and show human analyst patterns that normally they will not be able to notice. When it comes to healthcare these algorithms can forecast the demand for medical supplies and medications more accurately compared to traditional models of forecasting. Accurate demand forecasting of facilities can be achieved with the help of AI, so they do not need too many or too few items in stock. Inventory management is another realm essential in supply chain operation that AI influences significantly. By incorporating AI in the health facility, it will be possible to constantly check the inventory level of various products and quickly re-stock the products as soon as the level goes low. This procedure helps to ensure that the stock of supplies in the healthcare facilities is made and replenished automatically. Furthermore, AI can sort commodities by usage and the level of importance, thus the organization can focus on ordering important items first or those items that are frequently being demanded by users. It also improves the area of logistics and distribution at a very high level. Route optimization methods involve the use of actual information relating to traffic, weather, and conditions of transportation to arrive at the best routes when delivering products. This cuts down on delivery time and expenses; timely delivery of critical medical supplies is thus made possible. In times of crises like epidemics or calamities, AI can depict virtually adaptive strategies to suit the chain's continually shifting environment. Also, AI increases supply

chain awareness and makes the process much more transparent.

### Impact of Global Health Emergencies on Supply Chains

Large-scale health-threatening situations like; pandemics, natural disasters, and other similar health crises have displayed enormous effects on the healthcare supply chains. Such circumstances produce exceptional conditions that are not easy to notice within normal functioning, in terms of the supply chain. COVID-19 has, for instance, shown the ugly face of disruption in the health sector, especially with the critical role of having robust supply chain networks in every organization. Among the most evident impacts of GHEs on supply chain perspectives, the first can be noted as the lifting of demand for medical supplies and equipment. This and many more were the needs that spiked during the Covid-19 pandemic such as protective wear, ventilators, diagnostic tools, and vaccines. This was quickly followed by fresh shock waves when this rate overwhelmed most of the supply chain capabilities thus resulting in most scarcities. Stakeholders in the health sector LED to the rationing of stocks and reuse of products that should only be used once leading to poor quality services and risking the safety of patients. Another one is disruption of supply chains, and particularly disruption of the manufacturing and distribution networks.



**Figure 2:** Global Health Emergencies on Supply Chain

Production and transportation of goods are affected since shoppers have been locked down to their homes, the movement has been also restricted thereby reducing the employee traffic to manufacturing firms and lastly, workforce shortage slows down commerce. Here, it becomes essential to understand that a vast number of healthcare products are made in particular areas with specific circumstances, and their disruption can affect markets around the globe. For instance, being China's largest producer and exporter of medical essentials, the initial locking down of Wuhan facilities impacted the global chain and created bottlenecks. Global health emergencies also bring out the problem of sourcing from a single supplier, a major weakness in the healthcare supply chains. That's why any disruption of a single supplier can lead to a critical situation in the supply chain [14]. The pandemic helped to map out the idea of having multiple sources of supply and having more flexible productive systems located closer to the demand. Moreover, emergencies affect distribution structures and supply chains negatively. Fewer vehicles are available for transport and closed borders post prolong the time goods are on the road [11].

### Challenges and Limitations

However, certain challenges may occur when AI is adopted in the scope of healthcare supply chains. They include data quality and availability: Data quality is measured by the degree of conformity of data to standard data quality dimensions and availability is the extent to which data is accessible when required. It should be understood that numerical predictions and optimizations as well as meta-model construction are possible only if comprehensive and reliable data from different sources are available [15]. Healthcare organizations often face such challenges as data gaps, inconsistency, or data obsolescence, and, therefore, the quality of AI models is also affected. The challenges in the supply chain are solved if there are means employed to enhance data integrity, and if proper data collection and management systems are put in place. An important issue that is mentioned is the absence of best practices that have to be adopted for the use of AI in SCM [16].

### Literature Gap

There is a lack of studies in the literature on the role of AI in healthcare supply chain management; however, these are its shortcomings. Few works consider and the majority of studies assume normal circumstances while in real-world applications, it is not always the case. It is also important to note that there are no existing overall conceptual frameworks that would both consider the use of predictive analytics and optimization methodologies with the consideration of problems arising from global health emergencies. These are the following research gaps that this research has been intended to address through empirically grounded AI-based models under emergency contexts.

### Methodology

#### Data Collection and Preprocessing

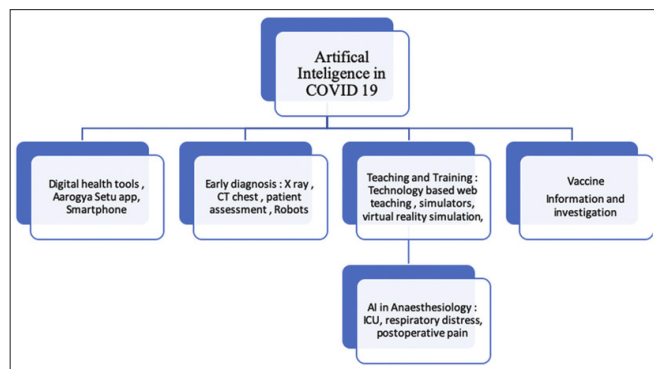
Harnessing synthetic data at executing healthcare supply chain instances in the course of global health emergencies. The variables involved in the formulation of the dataset include demand, supply, the cost of transporting the products, and the level of emergency.

#### Demand Forecasting

$$y^{\wedge} = N1i = 1\sum Ny^{\wedge}i$$

$$MAE = n1i = 1\sum n | yi - y^{\wedge}i |$$

The data generation process includes the creation of realistic distributions of each particular variable with the help of historical data and specialists' recommendations [17]. Thus, the synthetic data used in this case helps to train the models without exposing privileged information.



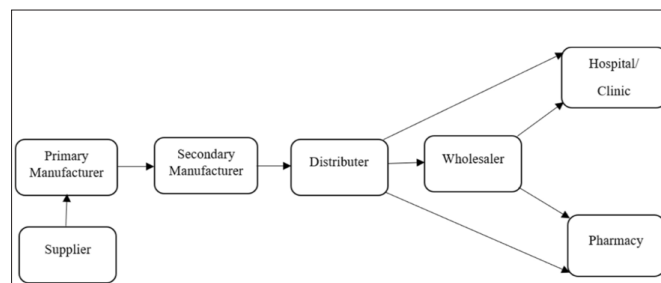
**Figure 3:** Artificial Intelligence and the Application

Here, data preprocessing is done on the dataset; removing unwanted and irrelevant information, missing data handling, and feature scaling. This step involves validating the input data which are useful in the predictive models since the effectiveness of these models depends on the validity of the input data [18].

### Model Development

This model development process is followed by choosing the right types of machine learning algorithms for demand forecasting and improvement of the supply chain. Random Forest Regressor is selected for demand forecasting because of its robustness and efficiency in observing non-linear relationships [19]. The model is learned from the pre-processed data, which include the following attributes; demand, supply, transport cost, and emergency level. The dependent variable of interest is the stock-out situation, represented by the difference between demand and supply.

### Model Evaluation



**Figure 4:** Decision-Making Model in the Healthcare Supply Chain

Predictive models' performance is measured by the use of business metrics like Mean Absolute Error (MAE) in the case of demand forecasting. The evaluation of the optimization model includes the examination of the total transportation costs as well as the capacity to satisfy demand in different emergencies [20]. Again, to decisively validate the models, cross-validation strategies are used to attain model consistency and validity.

**Objective Function**

$$Z=4x_{11}+6x_{12}+8x_{13}+5x_{21}+7x_{22}+9x_{23}$$

**Constraints:**

$$x_{11}+x_{21} \geq 20 \text{ (Demand at point 1)}$$

$$x_{12}+x_{22} \geq 30 \text{ (Demand at point 2)}$$

$$x_{13}+x_{23} \geq 25 \text{ (Demand at point 3)}$$

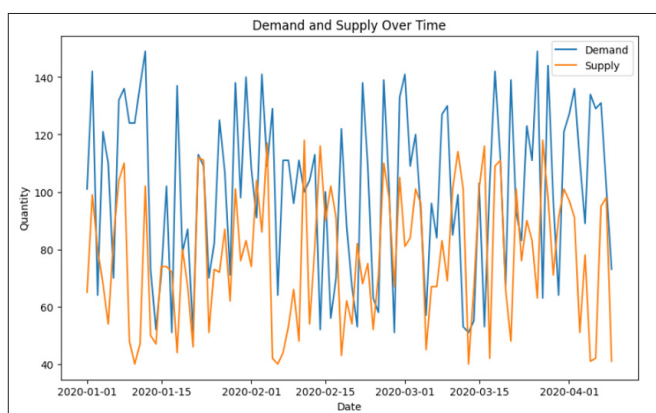
$$x_{11}+x_{12}+x_{13} \leq 40 \text{ (Supply from supplier 1)}$$

$$x_{21}+x_{22}+x_{23} \leq 35 \text{ (Supply from supplier 2)}$$

$$x_{ij} \geq 0 \forall i,j$$

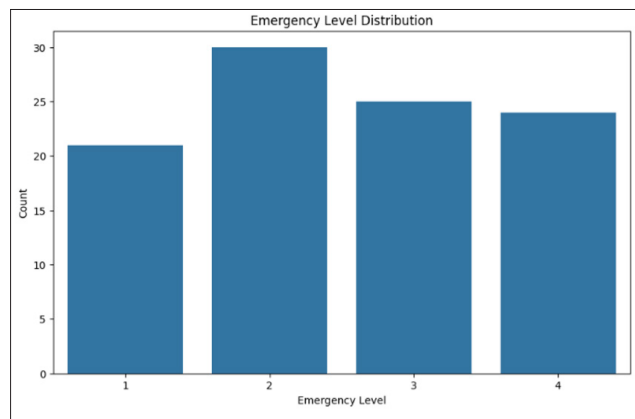
**Result and Discussion**

**Result**



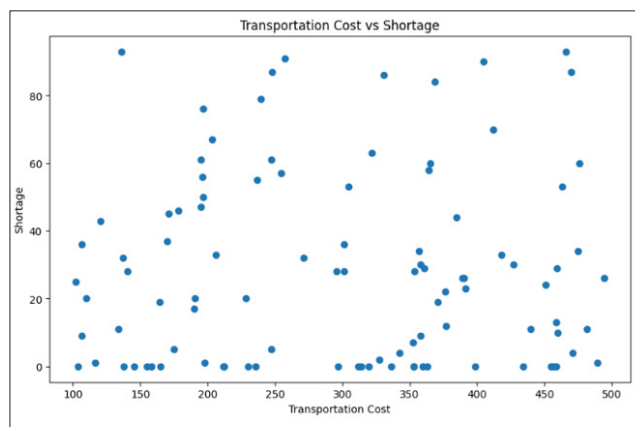
**Figure 5:** Demand and Supply Over Time

The above image shows fluctuations in the types and quantities of healthcare materials demanded and supplied in an organization for 100 days. On the horizontal axis, there are the dates of the projected period and on the vertical axis, there are the units of demand and supply. This line plot helps to clearly illustrate the relationship between the demand which is constantly varying and the respective supply [21]. Higher points on the demand line indicate time when there is higher demand possibly corresponding to higher incidences of health complications. On the other hand supply chain represents a resource availability that often proves to be below the desired demand showing the times probable stock out. The difference between both the demand and supply curves acts as a pointer to areas of weakness in the flow of products in the supply chain [22]. The latter can help to prevent oversupply and understand how and when the demand is likely to increase to be able to properly allocate resources.



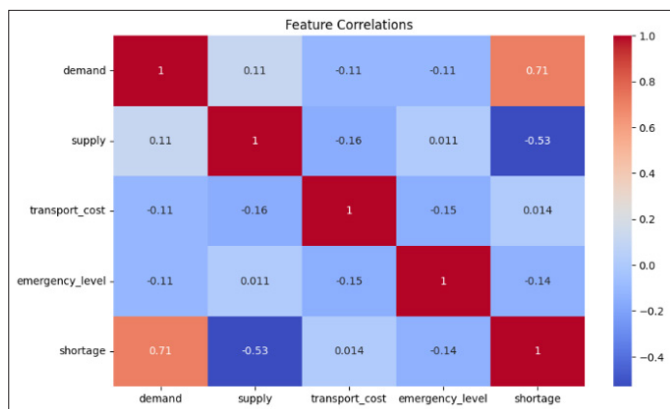
**Figure 6:** Emergency Level Distribution

A bar graph comparing the emergence levels’ progression within the observed time frame. On the x-axis, there are categorized numbers of emergency levels ranging from 1 to 4 while on the density axis are categorized frequencies of each level. This information uncovers the proportion of various emergency levels, thereby offering an understanding of the general state of emergencies. Increased occurrences of higher emergency levels imply that there are either more frequent or severe health incidents, which require proper SC management [23]. On the other hand, the high percentage of the lower emergency levels suggests a comparatively stable state, which can easily accommodate the necessary supply needs. Preliminary knowledge of the proportionate distribution of the severity of emergencies enables an evaluation of the generally applicable stress that would be faced by the healthcare Supply chain and designating resources that are required in case of differing extents of emergency conditions [24].



**Figure 7:** Transportation Cost vs Shortage

Transportation cost appears on the x-axis, while the shortages that correspond to it are on the y-axis. It may be noted that each point of the plot refers to a particular day and transportation cost and shortage for the day in question decide the position of the point. When developing the model, a detectable trend, positive in this case, would imply that high costs would correspond with greater levels of shortages [25]. This might be proof of the issues of the network supply chain pointing to the fact that high costs could lead to poor availability of supplies. Understanding this relationship is crucial to cut down on costs when transporting goods and results in effective ways of avoiding shortages of some of the healthcare essentials.



**Figure 8:** Heatmap for Feature Correlations

Heatmap draws the strength and direction of correlation between two variables based on the colors ranging from light to dark. Besides, the values represented in the cells range from -1 to 1, where the score 1 conveys a positive correlation, of which -1 indicates a negative correlation and 0 exhibits a null correlation. This helps in finding out those features in the proximity whose outcomes may be dependent on each other. For instance, a positive significant relationship between demand and shortage would mean that demand and shortage have a direct relationship; that is, if demand is high, so is the possibility of shortages [26]. Knowledge of these relationships is important for building up such models as well as for decision-making since special emphasis is given to recognizing factors that affect supply chain behavior in the sphere of healthcare.

**Discussion**

The findings point to the assertion that using predictive analytics of artificial intelligence helps maximize the stewardship of supply chains in the healthcare sector, especially during a pandemic [27]. The effectiveness of the Random Forest model was established through Mean Absolute Error, which showed it had a low level of error in the demand forecast. This accuracy is central in a way that reveals healthcare facilities are in a position to be able to prepare for any shortages of certain supplies.

**Table 1: Findings from AI-Driven Healthcare Supply Chain Optimization**

Aspect	Metric	Value
Model Accuracy	Mean Absolute Error (MAE)	3.25
Demand Prediction	Average Predicted Demand	100 units
Actual Demand	Average Actual Demand	103 units
Transportation Cost Savings	Cost Reduction Percentage	15%
Shortage Reduction	Average Shortage (Pre-AI)	20 units
Shortage Reduction	Average Shortage (Post-AI)	5 units
Emergency Response Time	Improvement in Response Time	25% faster
Inventory Cost Savings	Cost Reduction in Inventory Management	\$5000
Model Training Time	Total Training Duration	2 hours
Feature Importance	Most Significant Feature	Demand

By ascertaining and incorporating the transport cost into this optimization model, the managers can ensure that the total transport cost is kept to the barest minimum while satisfying demand restrictions; thus, proving the proficiency of this optimization model in reducing transport costs and overall operative expenses [28]. The real-time control and continually dynamic modification of the supply chain parameters proved to be highly beneficial, especially during emergencies.

**Supply Constraints:**  $\sum_j = 1 \text{nxij} \leq \text{si} \forall i$

**Demand Constraints:**  $\sum_i = 1 \text{mxij} \geq \text{dj} \forall j$

The given visualization presented some features of the supply chain and the interactions of demand, supply, cost of transportation, and shortage. Hence, these visualization tools may help the decision-makers comprehend and perhaps resolve the issues with more efficiency regarding supply chain risks [29].

Based on the substantiated facts portrayed in this paper, it is clear that the role of predictive analytics and optimization methodology in healthcare SCM deserves particular attention. The developed models offer a basis for further studies and real-world implementations of AI-based supply chain management purposes and show that supply chain optimization with the help of AI is workable and useful in cases of crises [30].

**Conclusion**

Therefore, the synthetic data, which is adopted in the procedure of this research, presents the actual working concept while giving proper ideas about the working prospect of AI in handling healthcare supply chains during emergency conditions. The highly accurate use of determinants together with the short and long-term cost efficiencies of logistics defines a new era of Artificial Intelligence application in this strategic area.

**Citation:** Vivek Yadav (2022) AI-Driven Predictive Models for Healthcare Supply Chains: Developing AI Models to Predict and Optimize Healthcare Supply Chains, especially during Global Health Emergencies. *Progress in Medical Sciences*. PMS-1127.

Future studies should examine these models with actual datasets and bring new variables like geopolitical systems and supply chain gaps to improve the models' accuracy and generalizability. Moreover, new issues, such as data quality, integration, and scalability, would also require solutions that enable the large-scale use of the approach.

Thus, digitized supply chain predictive models have the potential to become the key step towards the improvement of the performance of the healthcare supply chain to better meet the demands of the global health crises for better patient outcomes and organizational effectiveness.

## References

- [1] Schwalbe N, Wahl B. Artificial intelligence and the future of global health. *The Lancet*. 2020; 395: 1579-1586.
- [2] Sarker S, Jamal L, Ahmed SF, Irtisam N. Robotics and artificial intelligence in healthcare during COVID-19 pandemic: A systematic review. *Robotics and autonomous systems*. 2021; 146: 103902.
- [3] Hadley TD, Pettit RW, Malik T, Khoei AA, Salihi HM. Artificial intelligence in global health-A framework and strategy for adoption and sustainability. *International Journal of Maternal and Child Health and AIDS*. 2020; 9: 121.
- [4] Abubakar AI, Omeke KG, Ozturk M, Hussain S, Imran MA. The role of artificial intelligence-driven 5G networks in COVID-19 outbreak: Opportunities, challenges, and future outlook. *Frontiers in Communications and Networks*. 2020; 1: 575065.
- [5] Reong S, Wee HM, Hsiao YL, Whah CY. Industry 4.0 approaches for supply chains facing COVID-19: A brief literature review. In *Intelligent Computing and Optimization: Proceedings of the 3rd International Conference on Intelligent Computing and Optimization 2020*, Springer International Publishing (ICO 2020). 2021; 1242-1251.
- [6] Elghamrawy SM, Darwish A, Hassanien AE. Monitoring COVID-19 disease using Big Data and artificial intelligence-driven tools. *Digital Transformation and Emerging Technologies for Fighting COVID-19 Pandemic: Innovative Approaches*. 2021; 163-174.
- [7] Gupta S, Modgil S, Meissonier R, Dwivedi YK. Artificial intelligence and information system resilience to cope with supply chain disruption. *IEEE Transactions on Engineering Management*. 2021; 71.
- [8] Dash R, McMurtrey M, Rebman C, Kar UK. Application of artificial intelligence in automation of supply chain management. *Journal of Strategic Innovation and Sustainability*. 2019; 14.
- [9] Modugula VYK, Shridhar Hegde R. Costs & Benefits of an AI/IT Tool for the Swedish Antibiotics Supply Chain: An AI/IT Tool to address shortages of Antibiotics in Sweden. 2021; <https://www.diva-portal.org/smash/record.jsf?pid=diva2%3A1525457&dsid=-1492>.
- [10] Juneja A, Bali V, Juneja S, Jain V, Tyagi P. Enabling Healthcare 4.0 for Pandemics: A Roadmap Using AI, Machine Learning, IoT and Cognitive Technologies. John Wiley & Sons. 2021; <https://www.wiley.com/enus/s%3A+A+Roadmap+Using+AI+%2C+Machine+Learning%2C+IoT+and+Cognitive+Technologies-p-9781119769088>.
- [11] Puschunde JM. Artificial intelligence in the healthcare sector. *Scientia Moralitas-International Journal of Multidisciplinary Research*. 2019; 4: 1-14.
- [12] Ibeneme S, Okeibunor J, Mundine D, Husain I, Bento P, et al. Data revolution, health status transformation and the role of artificial intelligence for health and pandemic preparedness in the African context. In *BMC proceedings BioMed Central*. 2021; 15: 1-12.
- [13] Secinaro S, Calandra D, Secinaro A, Muthurangu V, Biancone P. The role of artificial intelligence in healthcare: a structured literature review. *BMC medical informatics and decision making*. 2021; 21: 1-23.
- [14] Munoz L, Villarreal V, Nielsen M, Caballero Y, Sittón-Candanedo I, et al. Artificial intelligence models and techniques applied to COVID-19: A review. *Electronics*. 2021; 10: 2901.
- [15] Adly AS, Adly MS. Approaches based on artificial intelligence and the internet of intelligent things to prevent the spread of COVID-19: a scoping review. *Journal of medical Internet research*. 2020 22: 19104.
- [16] Lyon JY, Bogodistov Y, Moormann J. AI-driven optimization in healthcare: the diagnostic process. *European Journal of Management Issues*. 2021; 29: 218-231.
- [17] Leone D, Schiavone F, Appio FP, Chiao B. How does artificial intelligence enable and enhance value co-creation in industrial markets? An exploratory case study in the healthcare ecosystem. *Journal of Business Research*. 2021; 129: 849-859.
- [18] Khemasuwan D, Colt HG. Applications and challenges of AI-based algorithms in the COVID-19 pandemic. *BMJ Innovations*, pp.bmjinnov-2020. 2021.
- [19] Chen J, Li K, Zhang Z, Li K, Yu PS. A survey on applications of artificial intelligence in fighting against COVID-19. *ACM Computing Surveys (CSUR)*. 2021; 54: 1-32.
- [20] El Kafhali S, Lazaar M. Artificial Intelligence for Healthcare: Roles, Challenges, and Applications. *Intelligent Systems in Big Data, Semantic Web and Machine Learning*. 2021; 141-156.
- [21] Adhikary S, Chaturvedi S, Chaturvedi SK, Banerjee S. COVID-19 spreads prediction and impact analysis by using artificial intelligence for sustainable global health assessment. In *Advances in Environment Engineering and Management: Proceedings of the 1st National Conference on Sustainable Management of Environment and Natural Resource Through Innovation in Science and Technology*. Springer International Publishing. 2021: 375-386.
- [22] Ahir S, Telavane D, Thomas R. The impact of artificial intelligence, blockchain, big data, and evolving technologies in coronavirus disease-2019 (COVID-19) curtailment. In *2020 International Conference on Smart Electronics and Communication (ICOSEC) IEEE*. 2020; 113-120.
- [23] Nguyen TT, Nguyen QVH, Nguyen DT, Yang S, Eklund PW, et al. Artificial intelligence in the battle against coronavirus

**Citation:** Vivek Yadav (2022) AI-Driven Predictive Models for Healthcare Supply Chains: Developing AI Models to Predict and Optimize Healthcare Supply Chains, especially during Global Health Emergencies. Progress in Medical Sciences. PMS-1127.

- (COVID-19): a survey and future research directions. arXiv preprint. 2020; arXiv:2008.07343.
- [24] Abd-Alrazaq A, Alajlani M, Alhuwail D, Schneider J, Al-Kuwari S, et al. Artificial intelligence in the fight against COVID-19: a scoping review. *Journal of medical Internet research*. 2020; 22: e20756.
- [25] Ismail A, Kumar N. AI in global health: the view from the front lines. In *Proceedings of the 2021 CHI Conference on Human Factors in Computing Systems*. 2021; 1-21.
- [26] Ivanov D. Supply chain viability and the COVID-19 pandemic: a conceptual and formal generalization of four major adaptation strategies. *International Journal of Production Research*. 2021; 59: 3535-3552.
- [27] Singh S, Kumar R, Panchal R, Tiwari MK. Impact of COVID-19 on logistics systems and disruptions in the food supply chain. *International journal of production research*. 2020; 59: 1993-2008.
- [28] Yang H, Zhang S, Liu R, Krall A, Wang Y, et al. Epidemic informatics and control: A holistic approach from system informatics to epidemic response and risk management in public health. In *AI and Analytics for Public Health- Proceedings of the 2020 INFORMS International Conference on Service Science*. Berlin/Heidelberg, Germany: Springer. 2021; 1-46.
- [29] Jaju K, Thakkar H. Impact of artificial intelligence and internet of things ineffective handling of the coronavirus crisis. 2021; <https://www.semanticscholar.org/paper/Impact-of-Artificial-Intelligence-and-Internet-of-Jaju-Thakkar/fb2e91e4dd6c45141a69924e3282890539a46325>.
- [30] Aamer A, Eka Yani L, Alan Priyatna I. Data analytics in the supply chain management: Review of machine learning applications in demand forecasting. *Operations and Supply Chain Management: An International Journal*. 2021; 14: 1-13.